

MONTHLY MEMBERSHIP PROGRESS REPORT

District 202 L

Results as of: 2/29/2024

GMT:

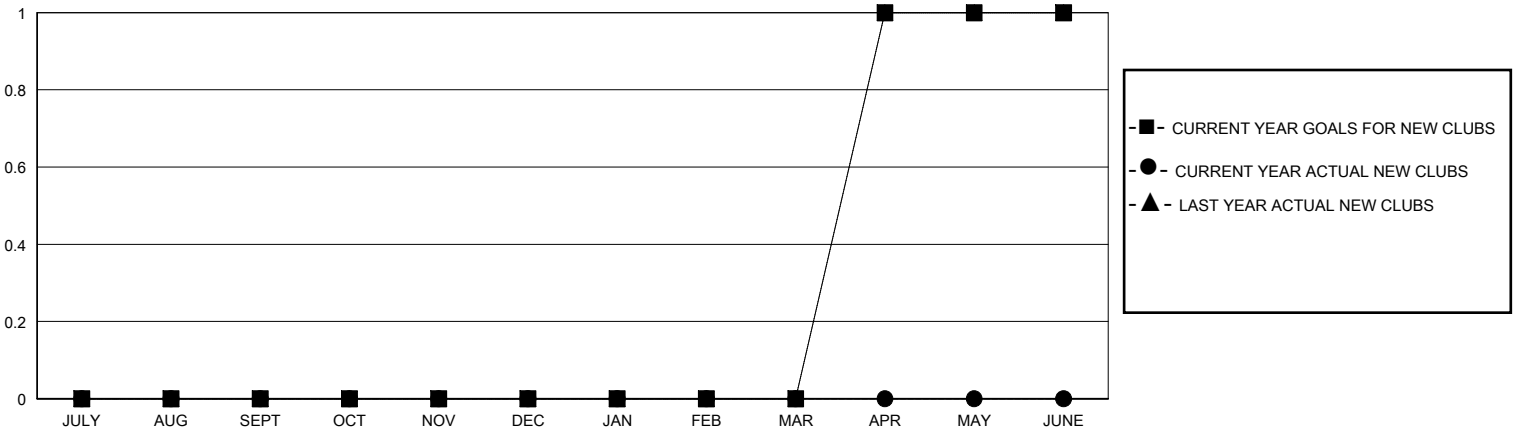
LOCATION NEW ZEALAND

GMT CA

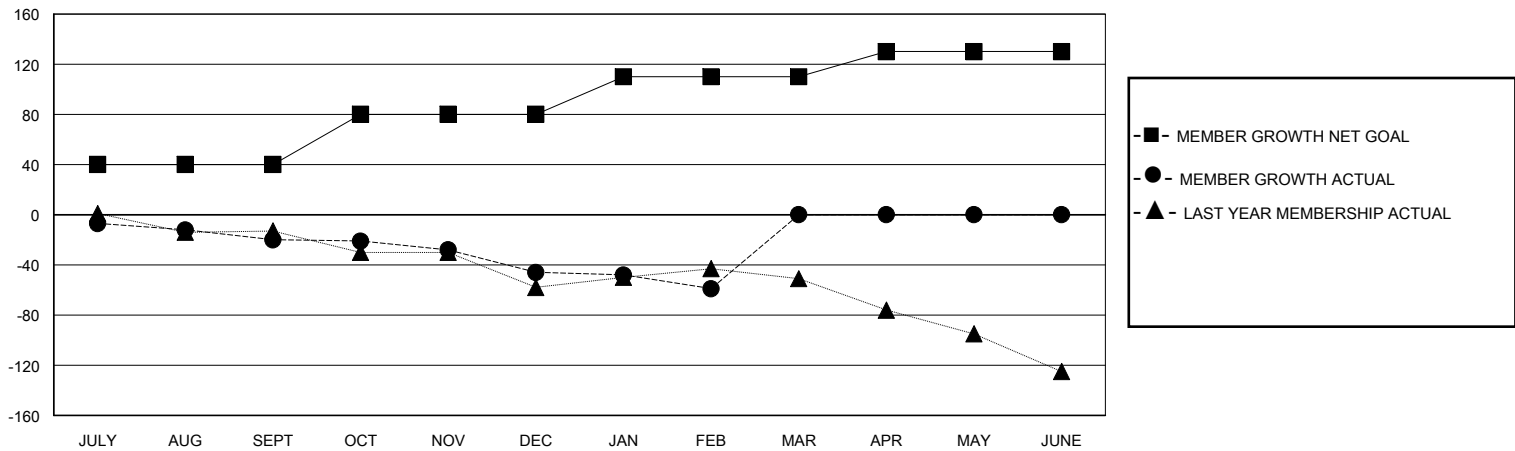
Clubs			
RESULTS FOR 2023-2024			
QUARTER	NEW CLUB GOAL	NEW CLUBS	DROPPED CLUBS
JULY/AUG/SEPT	0	0	0
OCT/NOV/DEC	0	0	1
JAN/FEB/MAR	0	0	0
APR/MAY/JUNE	1	0	0

Members			
RESULTS FOR 2023-2024			
QUARTER	MEMBER GROWTH NET GOAL	MEMBER GROWTH ACTUAL	DROPPED MEMBERS ACTUAL (including transfers)
JULY/AUG/SEPT	40	35	46
OCT/NOV/DEC	40	32	54
JAN/FEB/MAR	30	6	19
APR/MAY/JUNE	20	0	0

GOALS AND ACTUAL NEW CLUBS CUMULATIVE



GOALS AND ACTUAL MEMBERS CUMULATIVE



DROPPED CLUBS: 1	27 CLUBS OF 53 ADDED 1 OR MORE NEW MEMBERS	GENDER DISTRIBUTION MALE 882 (67.07%) FEMALE 432 (32.85%)
DROPPED MEMBERS DECEASED 13 CLUB CANCELLED 0 OTHER 106 TOTAL 119	CLICK HERE FOR CUMULATIVE MEMBERSHIP DATA	TOTAL FAMILY UNIT MEMBERS 138 FAMILY MEMBERS PAYING HALF DUES 69